

N.E. 1/4 OF  
SECTION 13, T.6N., R.2W., S.L.B. & M.

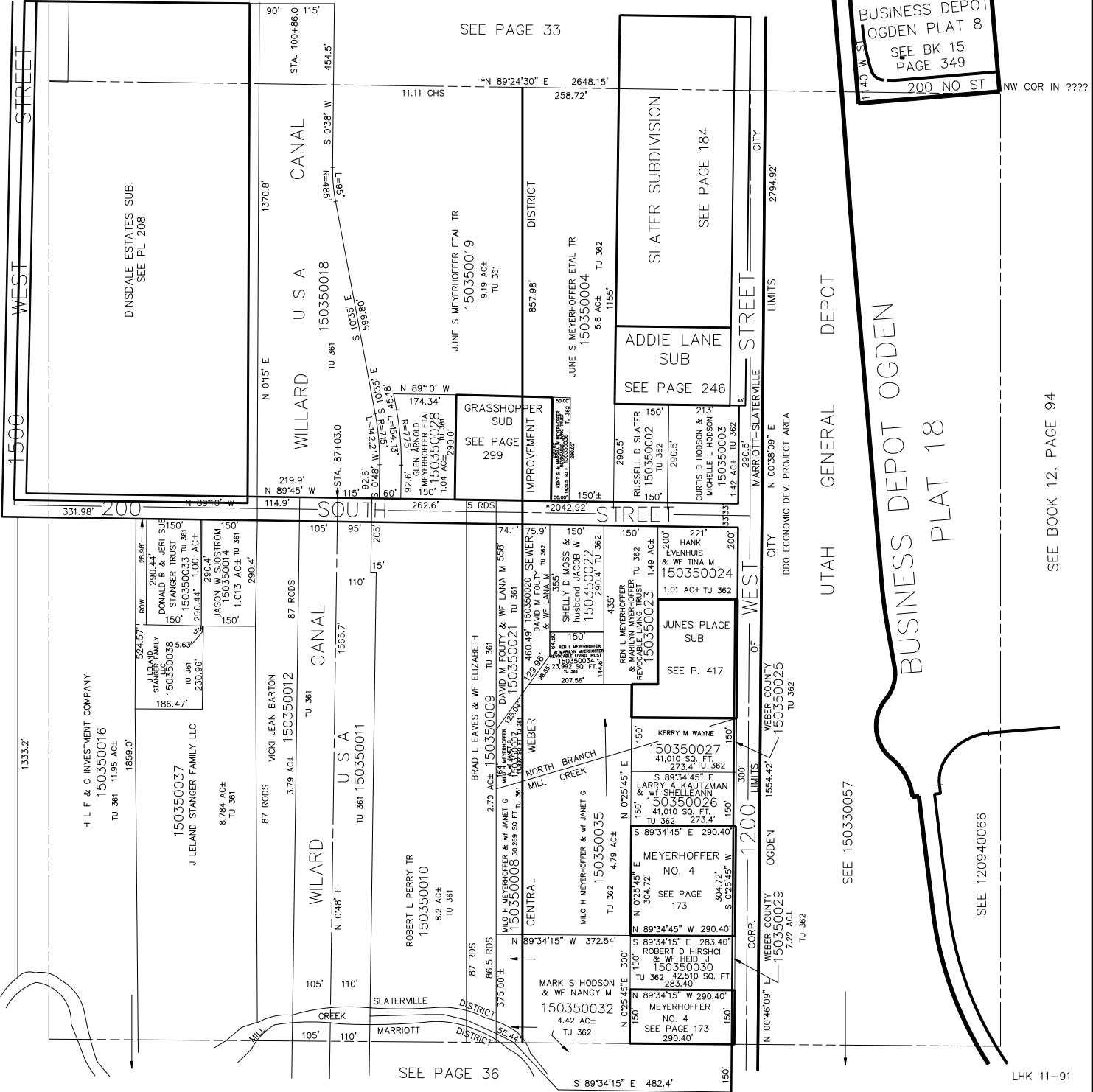
IN OGDEN CITY AND MARIOTT-SLATERVILLE CITY

TAXING UNIT: 358, 361, 362

SCALE 1" = 200'

SEE PAGE 38

15



BUSINESS DEPOT  
OGDEN PLAT 8  
SEE BK 15  
PAGE 349  
200' NO ST

NW COR IN ????

UTAH GENERAL DEPOT  
BUSINESS DEPOT OGDEN  
PLAT 18

SEE BOOK 12, PAGE 94

LHK 11-91